

Excellent Performance and High Reliability

**APELIO II
245**



AMADA

● **Artificial Intelligence Functional Device**

Programming at the NC console is easy owing to the MMC function. This Machine is capable of multi-functions operation and gives excellent performances such as simplification of operation, automatic selection of the punching or laser-cutting machining method, auto-output of the best condition for the machining, and self-diagnostic function.

● **Noise Control**

Noise control is realized by adoption of a hydraulic press system, and at the same time, high productivity is assured by the quick approach system.

● **Minimum Requirement for Space**

The best use of space is possible owing to the compact design.

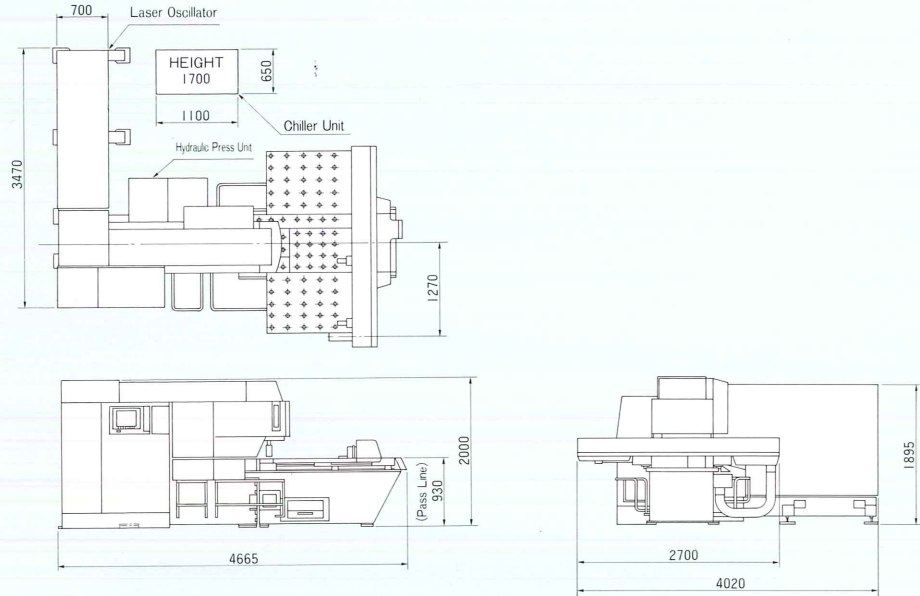
● **Application of IC Card**

As the IC Card Control System is applicable, storage of data is assured.

● **High Quality of Cutting Performance**

Provision of the 1 kW oscillator realized high speed and high quality cutting. In addition, due to employment of the clean-cutting equipment, reduction of the dross and non-oxidation cutting is achieved.

■ **COMMERCIAL DRAWING**



■ **SPECIFICATION**

Machine	maximum processing size	1000mm (Y) × 2540 mm (X) (Including repositioning)	
	axis movement	punch	1270mm, 1000mm (X, Y)
		laser	1270mm, 1000mm, 260mm (X, Y, Z)
	Max. feed speed	X, Y axis	28m/min.
		Z axis	12m/min.
		T axis	20r.p.m.
		Cutting feed speed (X, Y axis)	0~12 m/min.
	Cutting accuracy		± 0.10mm
		maximum	mild steel 6mm
	plate thickness	stainless	3mm (Laser)
maximum sheet weight		60kgW	
Punching Capacity	press capacity	15ton	
	press stroke	32mm	
	maximum hit rate	100h.p.m. (25mm pitch)	
	No. of turret stations	28	
Laser Oscillator	oscillator type	high speed axial flow type CO ₂ laser with RF discharge excitation	
	rated output	1000W	
	output stability	± 2%	
	output mode selection	continuous wave, pulse (switching by NC code)	
pulse	frequency	5~2000Hz	
	duty	0~100%	
NC Equipment	minimum input unit	0.001mm (X, Y, Z)	
	program memory capacity	320 m (including macro memory capacity)	
	input mode	1) MMC 2) IC card 3) MDI 4) editing	
Others	power requirement	40kVA (including chiller)	
	machine weight	9.5ton	

■ **TURRET SPECIFICATION**

H Type	name	punch dimension	No. of stations
	1/2	1.6~12.7φ	12 (12)
	1 1/4	12.8~31.7φ	16 (16)

※ This specification is subject to change without prior notification due to further technological development.